



COMMERCIAL HEATING SOLUTIONS



CONVECTOR HEATING

Units 13-14 Charlwoods Road
East Grinstead, West Sussex, RH19 2HU
www.clyderadiators.co.uk 01342 305550

A brand of IRSAP, Italy's leading manufacturer of design led radiators.

EDS 811/2 04.09.18

Contents

Clyde is a brand of the IRSAP, Italy's leading manufacturer of design led radiators. With over 50 years experience, we have the expertise to produce the best in quality & customer service.

Clyde provides bespoke solutions for LSTs, Cast Iron, Multi Column and Aluminium radiators. With a wide range of traditional and contemporary radiators, Clyde's solution based approach is designed to ensure we supply the ideal solution for all commercial and industrial requirements.

Our dedicated team of technical advisors and estimators will discuss your installation including the calculation of your heat output requirements (from drawings if necessary), arrange a full quotation based on your exact project specifications and provide lead times. They can also arrange a site visit from our National Sales Network if required.

For more information about Clyde or any our products, please contact our customer service department: 01342 305522 / 305566

Key Features & Technical Data	2-3
-------------------------------	-----

Selecting your Sentry LST	4
---------------------------	---

Radiator Models & Codes	4-7
-------------------------	-----

Connection Configurations	8
---------------------------	---

Installation	9-10
--------------	------

SENTRY LST

The Sentry range of LST's provides an economical way to heat areas where a level of safety is required. Wall hung to an open base, the Sentry is available in 40 standard sizes or can be made order to achieve specific output requirements. A single piece body case means that it is easy to install and remove for cleaning.

KEY FEATURES

- Quick and easy to install, first fix option
- Alumaxx® High Performance Convecteur
- 6 heights
- Widths ranging from 400mm to 2600mm
- Depths from 80mm to 275mm
- Wall hung, Open base
- 5 year guarantee

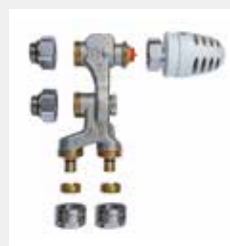


TECHNICAL DATA

- Pipework connection size is R $\frac{1}{2}$ Flow and Return.
- Range of pipework connection options are available to suit any application; a choice of thermostatic controls for the combination valve (see below).
- Designed for use with LTHW with a maximum flow temperature of 90°C, maximum allowable pressure of 6 bar.
- Convecteur heat exchanger suitable for MTHW with a maximum flow temperature of 130°C and 10 bar pressure rating is available to special order.
- A convecteur is especially suitable for this type of emitter, where heat exchange by convection is more desirable than radiation. Typically, covering a radiator and so restricting radiant heat transfer will reduce heat emissions by up to 60% (NHS Estates Health Guidance Note 'Safe' hot water and surface temperatures, 1998).
- The one-piece cover is manufactured from 1mm electrolytically galvanised steel to EN 101052 and polyester/epoxy powder coated for a high quality finish. Easy to clean and a poor harbour for dust and micro-organisms.

THERMOSTATIC RADIATOR VALVES & CONTROLS

- The Herz combination valve, shown below, is the standard configuration valve offered by Clyde (see pages 4 and 9).
- The standard valve from Clyde is for 2-pipe systems.
- A 1-pipe system valve is available to special order.
- The Herz valve is exceptionally versatile with connections for copper, steel or plastic pipe.
- Pipe connections are nominal 15mm.
- A choice of three alternative valve heads are available for the combination valve and are shown below;



Standard Herz valve for 2-pipe system, shown with standard manual wheelhead



Standard TRV Valve



Anti-tamper TRV valve



Remote TRV valve

SENTRY LST

TECHNICAL DATA

The Sentry LST is quick and easy to install, The convecteur can be installed and connected to the system during first fix, and the cover and TRV thermostatic control head fitted during second fix. See page 14 for more installation information and drawings.

PRODUCT FEATURES

- Easy to fit
- Single piece body case
- Robust High Efficiency
- Low water content
- Aluminium & steel heat emitter
- Highly Durable powder coated finish prevent corrosion
- Airvent included



HEAT EMISSION RATES

- ΔT_{50} (75°C / 65°C / 20°C)
- $\Delta T_{55.5}$ (82°C / 71°C / 21°C)
- ΔT_{60} (90°C / 70°C / 20°C)
- BS EN 442-1 conditions of ΔT_{50}

RANGE SELECTION

- 6 heights from 200mm-800mm
- 5 depths from 80mm-275mm
- 16 standard lengths 400mm-2600mm
- Other lengths available to special order (up to a maximum of 2600mm)
- Standard connection TBSE (Top Bottom Same End) illustrated in fig 1
- Alternative connection options on page 12
- A cut-out in the casing for the valve head supplied as standard
- Alternative positions; bottom left, top right or top left (for remote sensing valve) or no cut-out (bottom entry connections) will be made to order.

TECHNICAL DRAWINGS

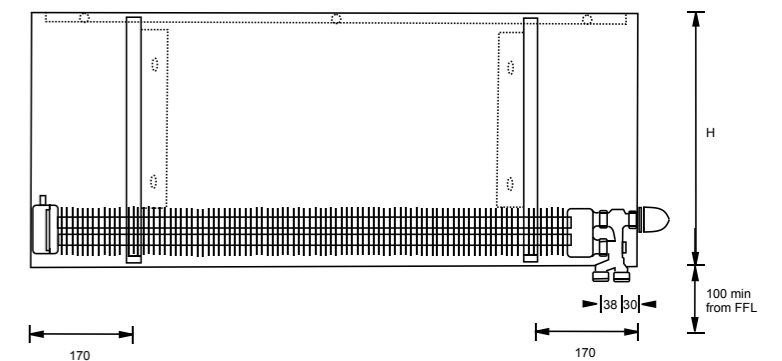


Fig 1 Sentry dimensions in mm, including pipe centres for Herz 2-pipe system valve.

Sentry depth	Dimension A (mm)
80	42.5
125	65
175	90
225	115
275	140

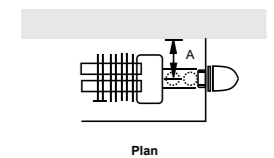
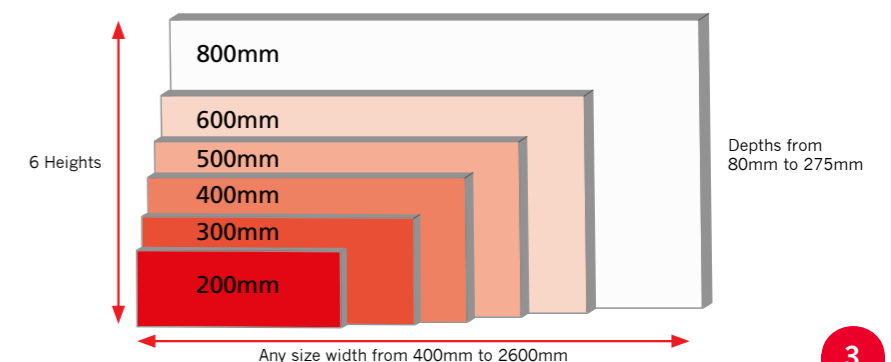


Fig 2 Distance of pipe centre from wall (dimension 'A') for each Sentry model

Any output can be achieved using variable size options for example; 400mm high x 1200mm wide x 175mm deep = 5782 Btu's / 1694 Watts

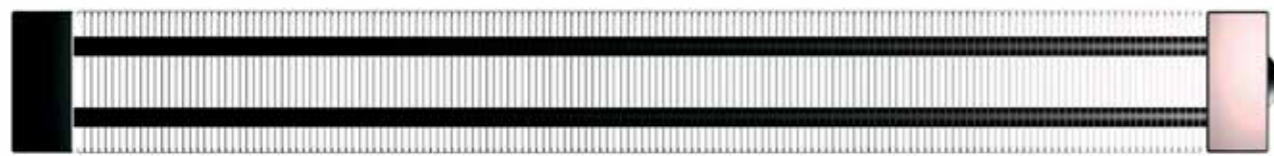


ALUMAXX® HIGH PERFORMANCE CONVECTOR

ALUMAXX® HPC; A UNIQUE HIGH PERFORMANCE CONVECTOR

The Alumaxx® High Performance Convector uses a unique combination of steel and aluminium, guaranteeing a high heat output, low weight and superior construction. The design and number of the aluminium fins contribute to the unique character of the patented Alumaxx® HPC convector.

TOP VIEW



SIDE VIEW

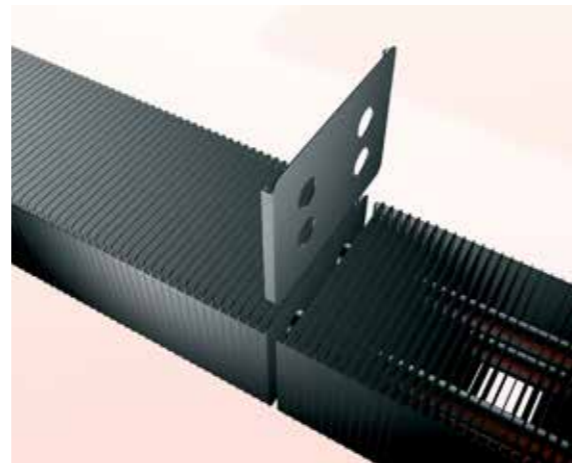


SOPHISTICATED DESIGN

The patented design of the fins of the Alumaxx® HPC convector is essential to delivering a superior product, with double-angled edges creating both a larger surface area and a strong rigid construction.

With a greater surface area than simple flat fins, the Alumaxx® achieves high heat output for its size.

The double edge 'U' shaped design of the fins creates rigid, flat side walls with no sharp edges, reducing the chance of them being bent or crumpled when handled or fitted. This helps maintain the flow of air through the convector.



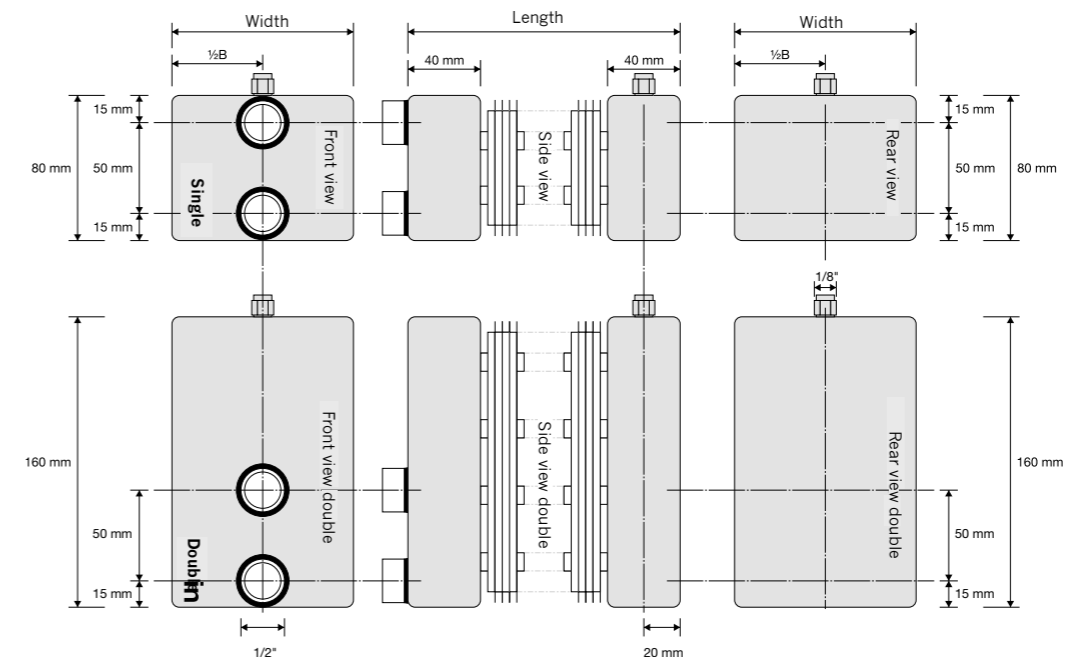
Each fin has shaped & interlocking edges for added strength

COLLECTOR

The Alumaxx® HPC is extremely versatile with 6 connection options for installation (see the illustrations and dimensions on pages 5 and 12). The standard version is Type B with flow and return on the same end, alternative configurations are available on request at no extra cost.



STANDARD - TYPE B

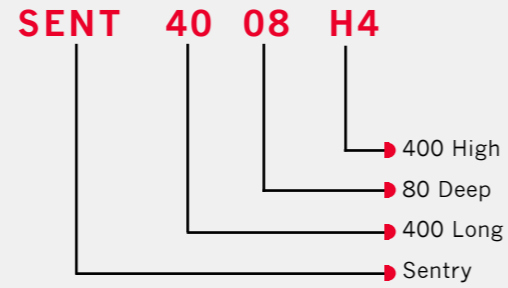


SENTRY SIZES ΔT50 (75°C / 65°C / 20°C)

RADIATOR MODELS & CODES

- Tables below give outputs for each model height at Δt50
- 1st column = model reference (see right)
- 2nd/3rd column = standard length & depth
- 4th column = should be suffixed with required height i.e 400mm high = H4 (see right)
- Bespoke lengths are available to special order to perfectly match any application

MODEL CODE (example)



SELECTING YOUR CENTURION LST;

- Choose model, height, length, depth and output as above
- Choose valve connection configuration from page 12. If no preference stated, standard configuration B (TBSE) will be provided
- Select the optionally available valve and TRV valve head from page 2
- Select the casing cut-out as page 3. If no preference is stated, bottom right cut-out will be supplied.

SENTRY SIZES ΔT50 (75°C / 65°C / 20°C), HEIGHTS 200MM - 800MM

Model	Length (mm)	Depth (mm)	Height = 200mm		Height = 300mm		Height = 400mm		Height = 500mm		Height = 600mm		Height = 800mm	
			Weight (kg)	ΔT50 (watts)	Weight (kg)	ΔT50 (watts)	Weight (kg)	ΔT50 (watts)	Weight (kg)	ΔT50 (watts)	Weight (kg)	ΔT50 (watts)	Weight (kg)	ΔT50 (watts)
SENT4008H	400	80	2.4	165	2.8	187	3.2	212	2.4	238	2.8	246	3.2	271
SENT4012H	400	125	4	283	4.4	341	4.8	393	4	445	4.4	466	4.8	510
SENT4017H	400	175	5.2	396	5.6	489	6	565	5.2	628	5.6	682	6	770
SENT4022H	400	225	6.4	536	6.8	655	7.2	747	6.4	821	6.8	881	7.2	971
SENT4027H	400	275	8	651	8.4	810	8.8	930	8	1035	8.4	1091	8.8	1188
SENT5008H	500	80	3	207	3.5	234	4	266	3	298	3.5	308	4	339
SENT5012H	500	125	5	354	5.5	426	6	491	5	556	5.5	583	6	637
SENT5017H	500	175	6.5	495	7	612	7.5	706	6.5	785	7	853	7.5	962
SENT5022H	500	225	8	671	8.5	819	9	934	8	1027	8.5	1102	9	1214
SENT5027H	500	275	10	814	10.5	1012	11	1162	10	1294	10.5	1364	11	1486
SENT6008H	600	80	3.6	248	4.2	280	4.8	319	3.6	358	4.2	370	4.8	407
SENT6012H	600	125	6	424	6.6	511	7.2	589	6	667	6.6	700	7.2	764
SENT6017H	600	175	7.8	594	8.4	734	9	847	7.8	942	8.4	1023	9	1154
SENT6022H	600	225	9.6	805	10.2	982	10.8	1121	9.6	1232	10.2	1322	10.8	1456
SENT6027H	600	275	12	976	12.6	1214	13.2	1394	12	1553	12.6	1636	13.2	1783
SENT7008H	700	80	4.2	289	4.9	327	5.6	372	4.2	417	4.9	431	5.6	475
SENT7012H	700	125	7	495	7.7	596	8.4	687	7	778	7.7	816	8.4	892
SENT7017H	700	175	9.1	693	9.8	856	10.5	988	9.1	1099	9.8	1194	10.5	1347
SENT7022H	700	225	11.2	939	11.9	1146	12.6	1308	11.2	1437	11.9	1542	12.6	1699
SENT7027H	700	275	14	1139	14.7	1417	15.4	1627	14	1812	14.7	1909	15.4	2080
SENT8008H	800	80	4.8	330	5.6	374	6.4	425	4.8	477	5.6	493	6.4	542
SENT8012H	800	125	8	566	8.8	682	9.6	786	8	890	8.8	933	9.6	1019
SENT8017H	800	175	10.4	792	11.2	978	12	1130	10.4	1256	11.2	1364	12	1539
SENT8022H	800	225	12.8	1073	13.6	1310	14.4	1494	12.8	1642	13.6	1762	14.4	1942
SENT8027H	800	275	16	1302	16.8	1619	17.6	1859	16	2070	16.8	2182	17.6	2377
SENT9008H	900	80	5.4	372	6.3	420	7.2	478	5.4	536	6.3	554	7.2	610
SENT9012H	900	125	9	636	9.9	767	10.8	884	9	1001	9.9	1049	10.8	1147
SENT9017H	900	175	11.7	891	12.6	1101	13.5	1271	11.7	1413	12.6	1535	13.5	1732
SENT9022H	900	225	14.4	1207	15.3	1473	16.2	1681	14.4	1848	15.3	1983	16.2	2184

SENTRY SIZES ΔT50 (75°C / 65°C / 20°C), HEIGHTS 200MM - 800MM

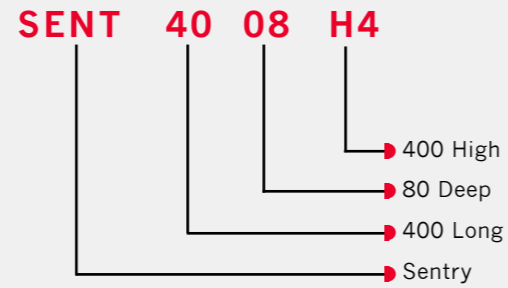
Model	Length (mm)	Depth (mm)	Height = 200mm		Height = 300mm		Height = 400mm		Height = 500mm		Height = 600mm		Height = 800mm	
			Weight (kg)	ΔT50 (watts)	Weight (kg)	ΔT50 (watts)	Weight (kg)	ΔT50 (watts)	Weight (kg)	ΔT50 (watts)	Weight (kg)	ΔT50 (watts)	Weight (kg)	ΔT50 (watts)
SENT9027H	900	275	18	1464	18.9	1822	19.8	2092	18	2329	18.9	2454	19.8	2674
SENT1008H	1000	80	6	413	7	467	8	531	6	596	7	616	8	678
SENT1012H	1000	125	10	707	11	852	12	982	10	1112	11	1166	12	1274
SENT1017H	1000	175	13	990	14	1223	15	1412	13	1570	14	1705	15	1924
SENT1022H	1000	225	16	1341	17	1637	18	1868	16	2053	17	2203	18	2427
SENT1027H	1000	275	20	1627	21	2024	22	2324	20	2588	21	2727	22	2971
SENT1108H	1100	80	6.6	454	7.7	514	8.8	584	6.6	656	7.7	678	8.8	746
SENT1112H	1100	125	11	778	12.1	937	13.2	1080	11	1223	12.1	1283	13.2	1401
SENT1117H	1100	175	14.3	1089	15.4	1345	16.5	1553	14.3	1727	15.4	1876	16.5	2116
SENT1122H	1100	225	17.6	1475	18.7	1801	19.8	2055	17.6	2258	18.7	2423	19.8	2670
SENT1127H	1100	275	22	1790	23.1	2226	24.2	2294	22	2847	23.1	3000	24.2	3268
SENT1208H	1200	80	7.2	496	8.4	560	9.6	637	7.2	715	8.4	739	9.6	814
SENT1212H	1200	125	12	848	13.2	1022	14.4	1178	12	1334	13.2	1399	14.4	1529
SENT1217H	1200	175	15.6	1188	16.8	1468	18	1694	15.6	1884	16.8	2046	18	2309
SENT1222H	1200	225	19.2	1609	20.4	1964	21.6	2242	19.2	2464	20.4	2644	21.6	2912
SENT1227H	1200	275	24	1952	25.2	2429	26.4	2789	24	3106	25.2	3272	26.4	3565
SENT1408H	1400	80	8.4	578	9.8	654	11.2	743	8.4	834	9.8	862	11.2	949
SENT1412H	1400	125	14	990	15.4	1193	16.8	1375	14	1557	15.4	1632	16.8	1784
SENT1417H	1400	175	18.2	1386	19.6	1712	21	1977	18.2	2198	19.6	2387	21	2694
SENT1422H	1400	225	22.4	1877	23.8	2292	25.2	2615	22.4	2874	23.8	3084	25.2	3398
SENT1427H	1400	275	28	2278	29.4	2834	30.8	3254	28	3623	29.4	3818	30.8	4159
SENT1608H	1600	80	9.6	661	11.2	747	12.8	850	9.6	954	11.2	986	12.8	1085
SENT1612H	1600	125	16	1131	17.6	1363	19.2	1571	16	1779	17.6	1866	19.2	2038
SENT1617H	1600	175	20.8	1584	22.4	1957	24	2259	20.8	2512	22.4	2728	24	3078
SENT1622H	1600	225	25.6	2146	27.2	2619	28.8	2989	25.6	3285	27.2	3525	28.8	3883
SENT1627H	1600	275	32	2603	33.6	3238	35.2	3718	32	4141	33.6	4363	35.2	4754
SENT1808H	1800	80	10.8	743	12.6	841	14.4	956	10.8	1073	12.6	1109	14.4	1220
SENT1812H	1800	125	18	1273	19.8	1534	21.6	1768	18	2002	19.8	2099	21.6	2293
SENT1817H	1800	175	23.4	1782	25.2	2201	27	2542	23.4	2826	25.2	3069	27	3463
SENT1822H	1800	225	28.8	2414	30.6	2947	32.4	3362	28.8	3695	30.6	3965	32.4	4369
SENT1827H	1800	275	36	2929	37.8	3643	39.6	4183	36	4658	37.8	4909	39.6	5348
SENT2008H	2000	80	12	826	14	934	16	1062	12	1192	14	1232	16	1356
SENT2012H	2000	125	20	1414	22	1704	24	1964	20	2224	22	2332	24	2548
SENT2017H	2000	175	26	1980	28	2446	30	2824	26	3140	28	3410	30	3848
SENT2022H	2000	225	32	2682	34	3274	36	3736	32	4106	34	4406	36	4854
SENT2027H	2000	275	40	3254	42	4048	44	4648	40	5176	42	5454	44	5942
SENT2208H	2200	80	13.2	909	15.4	1027	17.6	1168	13.2	1311	15.4	1355	17.6	1492
SENT2212H	2200	125	22	1555	24.2	1874	26.4	2160	22	2446	24.2	2565	26.4	2803
SENT2217H	2200	175	28.6	2178	30.8	2691	33	3106	28.6	3454	30.8	3751	33	4233
SENT2222H	2200	225	35.2	2950	37.4	3601	39.6	4110	35.2	4517	37.4	4847	39.6	5339
SENT2227H	2200	275	44	3579	46.2	4453	48.4	5113	44	5694	46.2	5999	48.4	6536
SENT2408H	2400	80	14.4	991	16.8	1121	19.2	1274	14.4	1430	16.8	1478	19.2	1627
SENT2412H	2400	125	24	1697	26.4	2045	28.8	2357	24	2669	26.4	2798	28.8	3058
SENT2417H	2400	175	31.2	2376	33.6	2935	36	3389	31.2	3768	33.6	4092	36	4618
SENT2422H	2400	225	38.4	3218	40.8	3929	43.2	4483	38.4	4927	40.8	5287	43.2	5825
SENT2427H	2400	275	48	3905	50.4	4858	52.8	5578	48	6211	50.4	6545	52.8	7130
SENT2608H	2600	80	15.6	1074	18.2	1214	20.8	1381	15.6	1550	18.2	1602	20.8	1763
SENT2612H	2600	125	26	1838	28.6	2215	31.2	2553	26	2891	28.6	3032	31.2	3312
SENT2617H	2600	175	33.8	2574	36.4	3180	39	3671	33.8	4082	36.4	4433	39	5002

SENTRY SIZES $\Delta T55.5$ (82°C / 71°C / 21°C)

RADIATOR MODELS & CODES

- Tables below give outputs for each model height at $\Delta T55.5$
- 1st column = model reference (see right)
- 2nd/3rd column = standard length & depth
- 4th column = should be suffixed with required height i.e 400mm high = H4 (see right)
- Bespoke lengths are available to special order to perfectly match any application

MODEL CODE (example)



SELECTING YOUR CENTURION LST;

- Choose model, height, length, depth and output as above
- Choose valve connection configuration from page 12. If no preference stated, standard configuration B (TBSE) will be provided
- Select the optionally available valve and TRV valve head from page 2
- Select the casing cut-out as page 3. If no preference is stated, bottom right cut-out will be supplied.

SENTRY SIZES $\Delta T55.5$ (82°C / 71°C / 21°C), HEIGHTS 200MM - 800MM

Model	Length (mm)	Depth (mm)	Height = 200mm		Height = 300mm		Height = 400mm		Height = 500mm		Height = 600mm		Height = 800mm	
			Weight (kg)	$\Delta T55.5$ (watts)	Weight (kg)	$\Delta T55.5$ (watts)	Weight (kg)	$\Delta T55.5$ (watts)	Weight (kg)	$\Delta T55.5$ (watts)	Weight (kg)	$\Delta T55.5$ (watts)	Weight (kg)	$\Delta T55.5$ (watts)
SENT4008H	400	80	2.4	191	2.8	217	3.2	246	2.4	276	2.8	285	3.2	314
SENT4012H	400	125	4	328	4.4	396	4.8	456	4	516	4.4	541	4.8	592
SENT4017H	400	175	5.2	459	5.6	567	6	655	5.2	728	5.6	791	6	893
SENT4022H	400	225	6.4	622	6.8	760	7.2	867	6.4	952	6.8	1022	7.2	1126
SENT4027H	400	275	8	755	8.4	940	8.8	1079	8	1201	8.4	1266	8.8	1378
SENT5008H	500	80	3	240	3.5	271	4	309	3	346	3.5	357	4	393
SENT5012H	500	125	5	411	5.5	494	6	570	5	645	5.5	676	6	739
SENT5017H	500	175	6.5	574	7	710	7.5	819	6.5	911	7	989	7.5	1116
SENT5022H	500	225	8	778	8.5	950	9	1083	8	1191	8.5	1278	9	1408
SENT5027H	500	275	10	944	10.5	1174	11	1348	10	1501	10.5	1582	11	1724
SENT6008H	600	80	3.6	288	4.2	325	4.8	370	3.6	415	4.2	429	4.8	472
SENT6012H	600	125	6	492	6.6	593	7.2	683	6	774	6.6	812	7.2	886
SENT6017H	600	175	7.8	689	8.4	851	9	983	7.8	1093	8.4	1187	9	1339
SENT6022H	600	225	9.6	934	10.2	1139	10.8	1300	9.6	1429	10.2	1534	10.8	1689
SENT6027H	600	275	12	1132	12.6	1408	13.2	1617	12	1801	12.6	1898	13.2	2068
SENT7008H	700	80	4.2	335	4.9	379	5.6	432	4.2	484	4.9	500	5.6	551
SENT7012H	700	125	7	574	7.7	691	8.4	797	7	902	7.7	947	8.4	1035
SENT7017H	700	175	9.1	804	9.8	993	10.5	1146	9.1	1275	9.8	1385	10.5	1563
SENT7022H	700	225	11.2	1089	11.9	1329	12.6	1517	11.2	1667	11.9	1789	12.6	1971
SENT7027H	700	275	14	1321	14.7	1644	15.4	1887	14	2102	14.7	2214	15.4	2413
SENT8008H	800	80	4.8	383	5.6	434	6.4	493	4.8	553	5.6	572	6.4	629
SENT8012H	800	125	8	657	8.8	791	9.6	912	8	1032	8.8	1082	9.6	1182
SENT8017H	800	175	10.4	919	11.2	1134	12	1311	10.4	1457	11.2	1582	12	1785
SENT8022H	800	225	12.8	1245	13.6	1520	14.4	1733	12.8	1905	13.6	2044	14.4	2253
SENT8027H	800	275	16	1510	16.8	1878	17.6	2156	16	2401	16.8	2531	17.6	2757
SENT9008H	900	80	5.4	432	6.3	487	7.2	554	5.4	622	6.3	643	7.2	708
SENT9012H	900	125	9	738	9.9	890	10.8	1025	9	1161	9.9	1217	10.8	1331
SENT9017H	900	175	11.7	1034	12.6	1277	13.5	1474	11.7	1639	12.6	1781	13.5	2009
SENT9022H	900	225	14.4	1400	15.3	1709	16.2	1950	14.4	2144	15.3	2300	16.2	2533

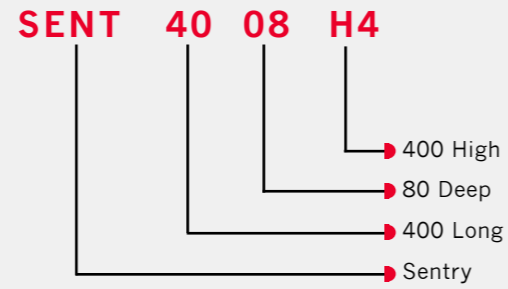
SENTRY SIZES $\Delta T55.5$ (82°C / 71°C / 21°C), HEIGHTS 200MM - 800MM

Model	Length (mm)	Depth (mm)	Height = 200mm		Height = 300mm		Height = 400mm		Height = 500mm		Height = 600mm		Height = 800mm	
			Weight (kg)	$\Delta T55.5$ (watts)	Weight (kg)	$\Delta T55.5$ (watts)	Weight (kg)	$\Delta T55.5$ (watts)	Weight (kg)	$\Delta T55.5$ (watts)	Weight (kg)	$\Delta T55.5$ (watts)	Weight (kg)	$\Delta T55.5$ (watts)
SENT9027H	900	275	18	1698	18.9	2114	19.8	2427	18	2702	18.9	2847	19.8	3102
SENT1008H	1000	80	6	479	7	542	8	616	6	691	7	715	8	786
SENT1012H	1000	125	10	820	11	988	12	1139	10	1290	11	1353	12	1478
SENT1017H	1000	175	13	1148	14	1419	15	1638	13	1821	14	1978	15	2232
SENT1022H	1000	225	16	1556	17	1899	18	2167	16	2381	17	2555	18	2815
SENT1027H	1000	275	20	1887	21	2348	22	2696	20	3002	21	3163	22	3446
SENT1108H	1100	80	6.6	527	7.7	596	8.8	677	6.6	761	7.7	786	8.8	865
SENT1112H	1100	125	11	902	12.1	1087	13.2	1253	11	1419	12.1	1488	13.2	1625
SENT1117H	1100	175	14.3	1263	15.4	1560	16.5	1801	14.3	2003	15.4	2176	16.5	2455
SENT1122H	1100	225	17.6	1711	18.7	2089	19.8	2384	17.6	2619	18.7	2811	19.8	3097
SENT1127H	1100	275	22	2076	23.1	2582	24.2	2661	22	3303	23.1	3480	24.2	3791
SENT1208H	1200	80	7.2	575	8.4	650	9.6	739	7.2	829	8.4	829	9.6	829
SENT1212H	1200	125	12	984	13.2	1186	14.4	1366	12	1547	13.2	1547	14.4	1547
SENT1217H	1200	175	15.6	1378	16.8	1703	18	1965	15.6	2185	16.8	2185	18	2185
SENT1222H	1200	225	19.2	1866	20.4	2278	21.6	2601	19.2	2858	20.4	2858	21.6	2858
SENT1227H	1200	275	24	2264	25.2	2818	26.4	3235	24	3603	25.2	3603	26.4	3603
SENT1408H	1400	80	8.4	670	9.8	759	11.2	862	8.4	967	9.8	967	11.2	967
SENT1412H	1400	125	14	1148	15.4	1384	16.8	1595	14	1806	15.4	1806	16.8	1806
SENT1417H	1400	175	18.2	1608	19.6	1986	21	2293	18.2	2550	19.6	2550	21	2550
SENT1422H	1400	225	22.4	2177	23.8	2659	25.2	3033	22.4	3334	23.8	3334	25.2	3334
SENT1427H	1400	275	28	2642	29.4	3287	30.8	3775	28	4203	29.4	4203	30.8	4203
SENT1608H	1600	80	9.6	767	11.2	867	12.8	986	9.6	1107	11.2	1107	12.8	1107
SENT1612H	1600	125	16	1312	17.6	1581	19.2	1822	16	2064	17.6	2064	19.2	2064
SENT1617H	1600	175	20.8	1837	22.4	2270	24	2620	20.8	2914	22.4	2914	24	2914
SENT1622H	1600	225	25.6	2489	27.2	3038	28.8	3467	25.6	3811	27.2	3811	28.8	3811
SENT1627H	1600	275	32	3019	33.6	3756	35.2	4313	32	4804	33.6	4804	35.2	4804
SENT1808H	1800	80	10.8	862	12.6	976	14.4	1109	10.8	1245	12.6	1245	14.4	1245
SENT1812H	1800	125	18	1477	19.8	1779	21.6	2051	18	2322	19.8	2322	21.6	2322
SENT1817H	1800	175	23.4	2067	25.2	2553	27	2949	23.4	3278	25.2	3278	27	3278
SENT1822H	1800	225	28.8	2800	30.6	3419	32.4	3900	28.8	4286	30.6	4286	32.4	4286
SENT1827H	1800	275	36	3398	37.8	4226	39.6	4852	36	5403	37.8	5403	39.6	5403
SENT2008H	2000	80	12	958	14	1083	16	1232	12	1383	14	1383	16	1383
SENT2012H	2000	125	20	1640	22	1977	24	2278	20	2580	22	2580	24	2580
SENT2017H	2000	175	26	2297	28	2837	30	3276	26	3642	28	3642	30	3642
SENT2022H	2000	225	32	3111	34	3798	36	4334	32	4763	34	4763	36	4763
SENT2027H	2000	275	40	3775	42	4696	44	5392	40	6004	42	6004	44	6004
SENT2208H	2200	80	13.2	1054	15.4	1191	17.6	1355	13.2	1521	15.4	1521	17.6	1521
SENT2212H	2200	125	22	1804	24.2	2174	26.4	2506	22	2837	24.2	2837	26.4	2837
SENT2217H	2200	175	28.6	2526	30.8	3122	33	3603	28.6	4007	30.8	4007	33	4007
SENT2222H	2200	225	35.2	3422	37.4	4177	39.6	4768	35.2	5240	37.4	5240	39.6	5240
SENT2227H	2200	275	44	4152	46.2	5165	48.4	5931	44	6605	46.2	6605	48.4	6605
SENT2408H	2400	80	14.4	1150	16.8	1300	19.2	1478	14.4	1659	16.8	1659	19.2	1659
SENT2412H	2400	125	24	1969	26.4	2372	28.8	2734	24	3096	26.4	3096	28.8	3096
SENT2417H	2400	175	31.2	2756	33.6	3405	36	3931	31.2	4371	33.6	4371	36	4371
SENT2422H	2400	225	38.4	3733	40.8	4558	43.2	5200	38.4	5715	40.8	5715	43.2	5715
SENT2427H	2400	275	48	4530	50.4	5635	52.8	6470	48	7205	50.4	7205	52.8	7205
SENT2608H	2600	80	15.6	1246	18.2	1408	20.8	1602	15.6	1798	18.2	1798	20.8	1798
SENT2612H	2600	125	26	2132	28.6	2569	31.2	2961	26	3354	28.6	3354	31.2	3354
SENT2617H	2600	175	33.8	2986	36.4	3689	39	4258	33.8	4735	36.4	4735	39	4735

RADIATOR MODELS & CODES

- Tables below give outputs for each model height at $\Delta t60$
- 1st column = model reference (see right)
- 2nd/3rd column = standard length & depth
- 4th column = should be suffixed with required height i.e 400mm high = H4 (see right)
- Bespoke lengths are available to special order to perfectly match any application

MODEL CODE (example)



SELECTING YOUR SENTRY LST;

- Choose model, height, length, depth and output as above
- Choose valve connection configuration from page 12. If no preference stated, standard configuration B (TBSE) will be provided
- Select the optionally available valve and TRV valve head from page 2
- Select the casing cut-out as page 3. If no preference is stated, bottom right cut-out will be supplied.

SENTRY SIZES $\Delta T60$ (90°C / 70°C / 20°C), HEIGHTS 200MM - 800MM

Model	Length (mm)	Depth (mm)	Height = 200mm		Height = 300mm		Height = 400mm		Height = 500mm		Height = 600mm		Height = 800mm	
			Weight (kg)	$\Delta T60$	Weight (kg)	$\Delta T60$	Weight (kg)	$\Delta T60$	Weight (kg)	$\Delta T60$	Weight (kg)	$\Delta T60$	Weight (kg)	$\Delta T60$
SENT4008H	400	80	2.4	216	2.8	240	3.2	274	2.4	308	2.8	317	3.2	344
SENT4012H	400	125	4	372	4.4	437	4.8	506	4	576	4.4	600	4.8	646
SENT4017H	400	175	5.2	520	5.6	640	6	734	5.2	811	5.6	878	6	984
SENT4022H	400	225	6.4	703	6.8	861	7.2	976	6.4	1064	6.8	1137	7.2	1240
SENT4027H	400	275	8	852	8.4	1064	8.8	1213	8	1342	8.4	1407	8.8	1516
SENT5008H	500	80	3	271	3.5	300	4	342	3	386	3.5	396	4	430
SENT5012H	500	125	5	465	5.5	547	6	633	5	720	5.5	750	6	808
SENT5017H	500	175	6.5	651	7	801	7.5	918	6.5	1014	7	1098	7.5	1230
SENT5022H	500	225	8	879	8.5	1076	9	1220	8	1331	8.5	1421	9	1550
SENT5027H	500	275	10	1066	10.5	1330	11	1517	10	1677	10.5	1759	11	1896
SENT6008H	600	80	3.6	325	4.2	359	4.8	410	3.6	463	4.2	475	4.8	516
SENT6012H	600	125	6	557	6.6	656	7.2	760	6	864	6.6	900	7.2	970
SENT6017H	600	175	7.8	781	8.4	961	9	1102	7.8	1217	8.4	1317	9	1475
SENT6022H	600	225	9.6	1055	10.2	1291	10.8	1463	9.6	1597	10.2	1705	10.8	1859
SENT6027H	600	275	12	1279	12.6	1596	13.2	1820	12	2012	12.6	2111	13.2	2275
SENT7008H	700	80	4.2	379	4.9	419	5.6	479	4.2	540	4.9	554	5.6	602
SENT7012H	700	125	7	650	7.7	765	8.4	886	7	1008	7.7	1050	8.4	1131
SENT7017H	700	175	9.1	911	9.8	1121	10.5	1285	9.1	1420	9.8	1537	10.5	1721
SENT7022H	700	225	11.2	1231	11.9	1506	12.6	1707	11.2	1863	11.9	1989	12.6	2169
SENT7027H	700	275	14	1492	14.7	1862	15.4	2123	14	2348	14.7	2463	15.4	2654
SENT8008H	800	80	4.8	433	5.6	479	6.4	547	4.8	617	5.6	634	6.4	688
SENT8012H	800	125	8	743	8.8	874	9.6	1013	8	1152	8.8	1200	9.6	1293
SENT8017H	800	175	10.4	1041	11.2	1281	12	1469	10.4	1622	11.2	1756	12	1967
SENT8022H	800	225	12.8	1406	13.6	1722	14.4	1951	12.8	2129	13.6	2274	14.4	2479
SENT8027H	800	275	16	1705	16.8	2128	17.6	2426	16	2683	16.8	2814	17.6	3033
SENT9008H	900	80	5.4	487	6.3	539	7.2	616	5.4	694	6.3	713	7.2	774
SENT9012H	900	125	9	836	9.9	984	10.8	1139	9	1296	9.9	1350	10.8	1454
SENT9017H	900	175	11.7	1171	12.6	1441	13.5	1652	11.7	1825	12.6	1976	13.5	2213
SENT9022H	900	225	14.4	1582	15.3	1937	16.2	2195	14.4	2395	15.3	2558	16.2	2789

SENTRY SIZES $\Delta T60$ (90°C / 70°C / 20°C), HEIGHTS 200MM - 800MM

Model	Length (mm)	Depth (mm)	Height = 200mm		Height = 300mm		Height = 400mm		Height = 500mm		Height = 600mm		Height = 800mm	
			Weight (kg)	$\Delta T60$	Weight (kg)	$\Delta T60$	Weight (kg)	$\Delta T60$	Weight (kg)	$\Delta T60$	Weight (kg)	$\Delta T60$	Weight (kg)	$\Delta T60$
SENT9027H	900	275	18	1918	18.9	2394	19.8	2730	18	3019	18.9	3166	19.8	3412
SENT1008H	1000	80	6	541	7	599	8	684	6	771	7	792	8	860
SENT1012H	1000	125	10	929	11	1093	12	1266	10	1440	11	1500	12	1616
SENT1017H	1000	175	13	1301	14	1601	15	1836	13	2028	14	2195	15	2459
SENT1022H	1000	225	16	1758	17	2152	18	2439	16	2661	17	2842	18	3099
SENT1027H	1000	275	20	2131	21	2660	22	3033	20	3354	21	3518	22	3791
SENT1108H	1100	80	6.6	595	7.7	659	8.8	752	6.6	848	7.7	871	8.8	946
SENT1112H	1100	125	11	1022	12.1	1202	13.2	1393	11	1584	12.1	1650	13.2	1778
SENT1117H	1100	175	14.3	1431	15.4	1761	16.5	2020	14.3	2231	15.4	2415	16.5	2705
SENT1122H	1100	225	17.6	1934	18.7	2367	19.8	2683	17.6	2927	18.7	3126	19.8	3409
SENT1127H	1100	275	22	2344	23.1	2926	24.2	3014	22	3689	23.1	3870	24.2	4170
SENT1208H	1200	80	7.2	649	8.4	719	9.6	821	7.2	925	8.4	950	9.6	1032
SENT1212H	1200	125	12	1115	13.2	1312	14.4	1519	12	1728	13.2	1800	14.4	1939
SENT1217H	1200	175	15.6	1561	16.8	1921	18	2203	15.6	2434	16.8	2634	18	2951
SENT1222H	1200	225	19.2	2110	20.4	2582	21.6	2927	19.2	3193	20.4	3410	21.6	3719
SENT1227H	1200	275	24	2557	25.2	3193	26.4	3640	24	4025	25.2	4222	26.4	4549
SENT1408H	1400	80	8.4	757	9.8	839	11.2	958	8.4	1079	9.8	1109	11.2	1204
SENT1412H	1400	125	14	1301	15.4	1530	16.8	1772	14	2016	15.4	2100	16.8	2262
SENT1417H	1400	175	18.2	1821	19.6	2241	21	2570	18.2	2839	19.6	3073	21	3443
SENT1422H	1400	225	22.4	2461	23.8	3013	25.2	3415	22.4	3725	23.8	3979	25.2	4339
SENT1427H	1400	275	28	2983	29.4	3724	30.8	4246	28	4696	29.4	4925	30.8	5307
SENT1608H	1600	80	9.6	866	11.2	958	12.8	1094	9.6	1234	11.2	1267	12.8	1376
SENT1612H	1600	125	16	1486	17.6	1749	19.2	2026	16	2304	17.6	2400	19.2	2586
SENT1617H	1600	175	20.8	2082	22.4	2562	24	2938	20.8	3245	22.4	3512	24	3934
SENT1622H	1600	225	25.6	2813	27.2	3443	28.8	3902	25.6	4258	27.2	4547	28.8	4958
SENT1627H	1600	275	32	3410	33.6	4256	35.2	4853	32	5366	33.6	5629	35.2	6066
SENT1808H	1800	80	10.8	974	12.6	1078	14.4	1231	10.8	1388	12.6	1426	14.4	1548
SENT1812H	1800	125	18	1672	19.8	1967	21.6	2279	18	2592	19.8	2700	21.6	2909
SENT1817H	1800	175	23.4	2342	25.2	2882	27	3305	23.4	3650	25.2	3951	27	4426
SENT1822H	1800	225	28.8	3164	30.6	3874	32.4	4390	28.8	4790	30.6	5116	32.4	5578
SENT1827H	1800	275	36	3836	37.8	4788	39.6	5459	36	6037	37.8	6332	39.6	6824
SENT2008H	2000	80	12	1082	14	1198	16	1368	12	1542	14	1584	16	1720
SENT2012H	2000	125	20	1858	22	2186	24	2532	20	2880	22	3000	24	3232
SENT2017H	2000	175	26	2602	28	3202	30	3672	26	4056	28	4390	30	4918
SENT2022H	2000	225	32	3516	34	4304	36	4878	32	5322	34	5684	36	6198
SENT2027H	2000	275	40	4262	42	5320	44	6066	40	6708	42	7036	44	7582
SENT2208H	2200	80	13.2	1190	15.4	1318	17.6	1505	13.2	1696	15.4	1742	17.6	1892
SENT2212H	2200	125	22	2044	24.2	2405	26.4	2785	22	3168	24.2	3300	26.4	3555
SENT2217H	2200	175	28.6	2862	30.8	3522	33	4039	28.6	4462	30.8	4829	33	5410
SENT2222H	2200	225	35.2	3868	37.4	4734	39.6	5366	35.2	5854	37.4	6252	39.6	6818
SENT2227H	2200	275	44	4688	46.2	5852	48.4	6673	44	7379	46.2	7740	48.4	8340
SENT2408H	2400	80	14.4	1298	16.8	1438	19.2	1642	14.4	1850	16.8	1901	19.2	2064
SENT2412H	2400	125	24	2230	26.4	2623	28.8	3038	24	3456	26.4	3600	28.8	3878
SENT2417H	2400	175	31.2	3122	33.6	3842	36	4406	31.2	4867	33.6	5268	36	5902
SENT2422H	2400	225	38.4	4219	40.8	5165	43.2	5854	38.4	6386	40.8	6821	43.2	7438
SENT2427H	2400	275	48	5114	50.4	6384	52.8	7279	48	8050	50.4	8443	52.8	9098
SENT2608H	2600	80	15.6	1407	18.2	1557	20.8	1778	15.6	2005	18.2	2059	20.8	2236
SENT2612H	2600	125	26	2415	28.6	2842	31.2	3292	26	3744	28.6	3900	31.2	4202
SENT2617H	2600	175	33.8	3383	36.4	4163	39	4774	33.8	5273	36.4	5707	39	6393

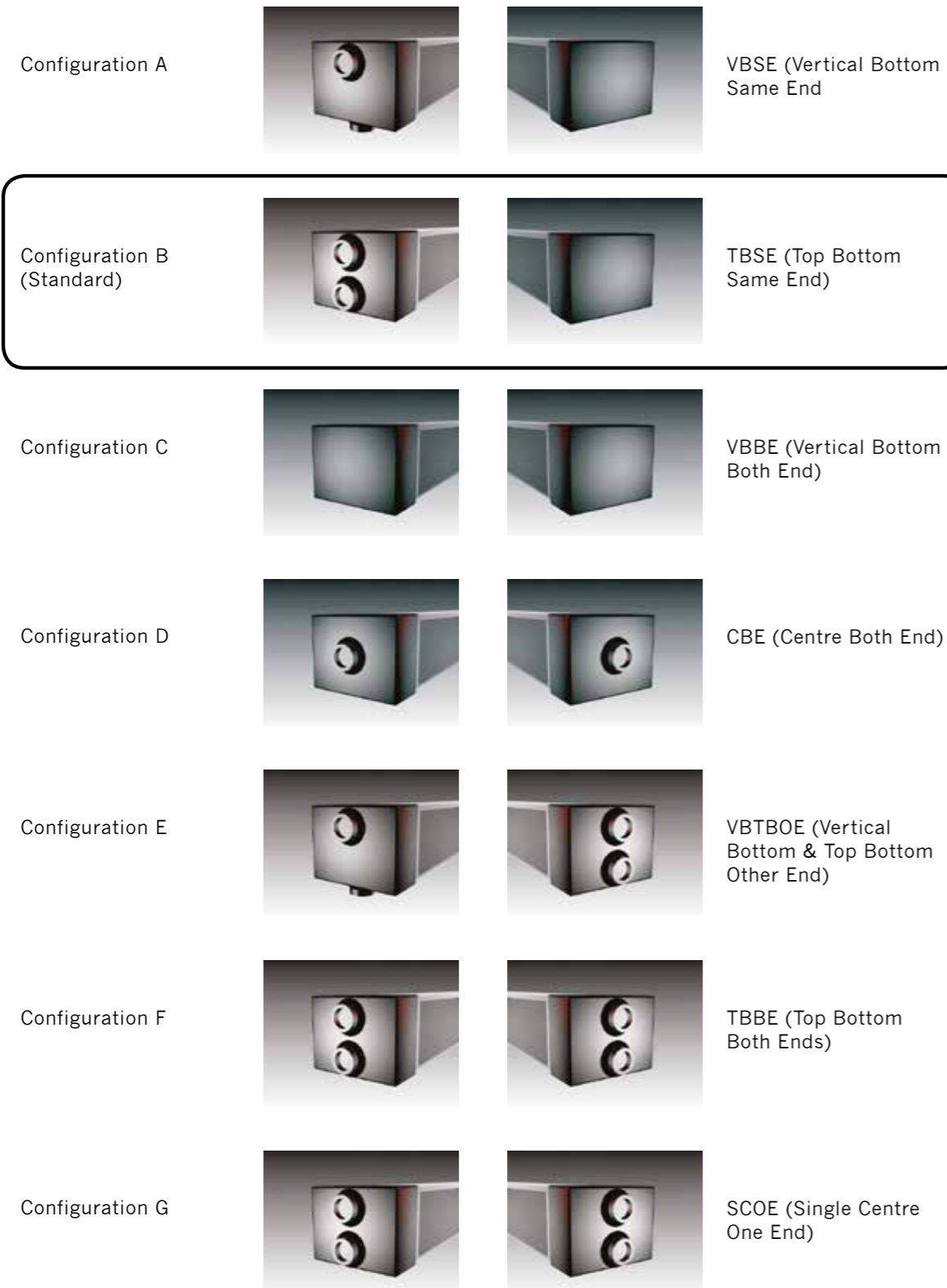
CONNECTION CONFIGURATIONS

PIPEWORK AND VALVE CONNECTION

The available connection configurations are shown below. All connections are R $\frac{1}{2}$.

FIG 3 CONNECTION CONFIGURATIONS

Please note that standard configuration B, highlighted below, would be used with the Herz valves supplied by Clyde.



INSTALLATION

PRELIMINARY

Before unpacking, please ensure that the delivered sizes and quantity are correct. Any shortages or damages must be notified to Clyde Radiators in writing within 7 days; Clyde Radiators, 13-14 Charlwoods Road, East Grinstead, West Sussex, RH19 2HU.

Unpack carefully and inspect the convector, cover and fittings. The following items should be identified;

- Convector
- Casing with selected valve head cut-outs
- Brackets and hanging straps. The number of these is dependant upon the convector dimensions
- Airvent
- Herz valve, TRV thermostatic valve head and changefix spanner if ordered

Fig 4 below is a diagram of the Sentry. Refer to figs 1 and 2 on page 3 for bracket fixing dimensions and pipe centres

INSTALLATION

The Sentry LST is quick and easy to install, as shown in the six steps on page 14. The convector can be installed and connected to the system during first fix, and the cover and TRV thermostatic control head fitted during second fix.

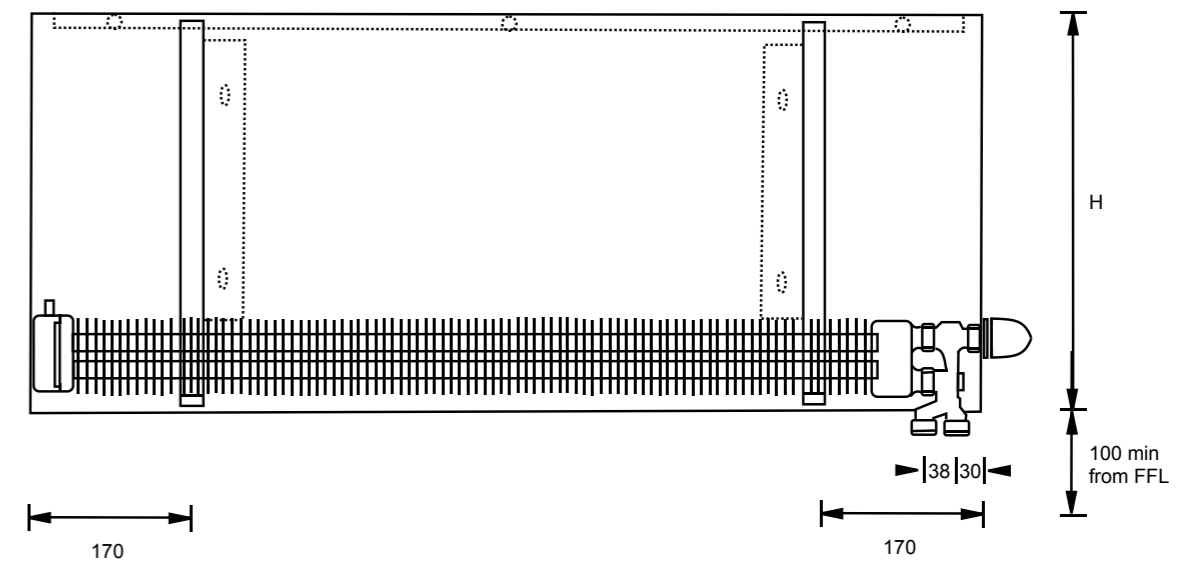


Fig 1 Sentry dimensions in mm, including pipe centres for Herz 2-pipe system valve.

Sentry depth	Dimension A (mm)
80	42.5
125	65
175	90
225	115
275	140

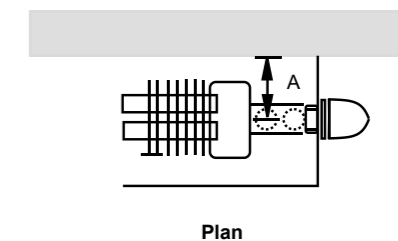



Fig 2 Distance of pipe centre from wall (dimension 'A') for each Sentry model

FIG 4 SENTRY DIAGRAM

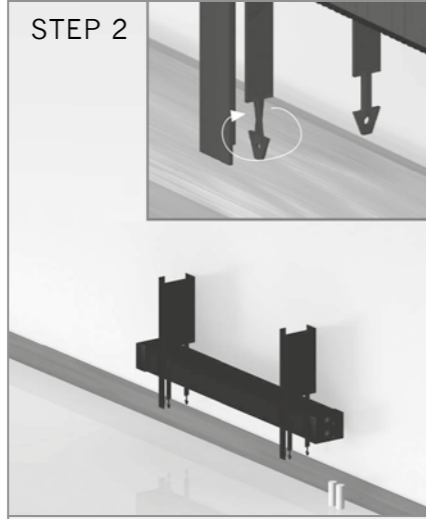
INSTALLATION

STEP 1



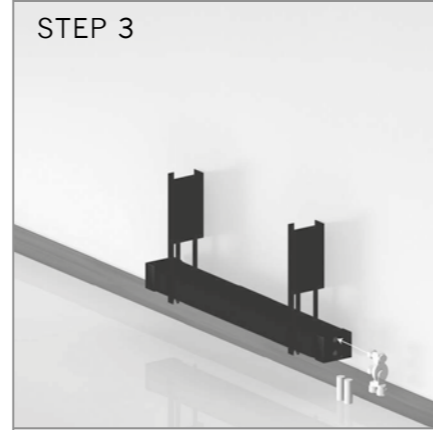
STEP 1
Position the casing, then put the 2 outside brackets 170mm from the right and left side off the casing (see drawing on page 13)
Place the convector on the floor and then mount the brackets to the wall to the predefined place using the appropriate screws. If more than 2 brackets per convector, dispense the remaining brackets proportionate between the 2 outside feet

STEP 2




STEP 2
Slide the convector from the bottom up on the brackets with the arrow shaped tips. Rotate the arrowshaped ends a quarter turn.
Slide the convector down until it hangs on the arrow shaped tips.

STEP 3




STEP 3
Connect the valve on to the convector and water supply.

STEP 4



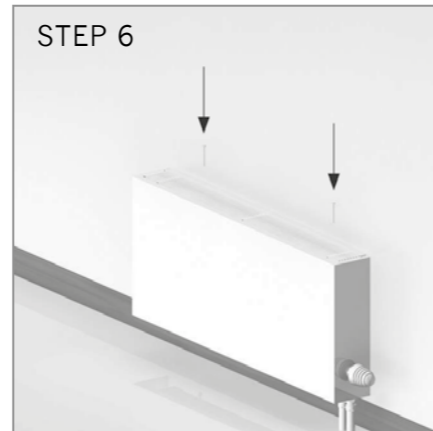
STEP 4
Place the grille on the wall brackets.

STEP 5



STEP 5
Place the casing to an angle of +/- 15 degrees first at the bottom over the wall brackets and convector.
Lift the casing against the bottom off the wall brackets and press the top off the casing over the top off the wall brackets.

STEP 6



STEP 6
Secure the casing to the wall brackets at the top with the self tapping screws through the perforated part on the bracket and grille.

ALTERNATIVE LST - THE CENTURION

An alternative option to the Sentry is the Centurion. The Centurion LST range has been specifically designed to provide safe, durable and practical heating for areas where the care and safety of occupants is a primary concern.

PRODUCT FEATURES

- Quick and easy to install, first fix option
- Alumaxx® High Performance Convector
- Sturdy single piece casing
- Robust High Efficiency
- Low water content
- Aluminium & steel heat emitter
- Highly Durable powder coated finish prevent corrosion
- BSRIA tested



See EDS 812/2 for full details

OTHER CLYDE PRODUCTS

Clyde Radiators

COMMERCIAL HEATING SOLUTIONS

- 4 Flat Panel radiators
- Lightweight & Efficient Sectional Aluminum
- Sectional Cast Iron in 4 styles
- Sectional Steel Multi Column in over 3200 sizes
- Trench: Practical aluminium convector for underfloor heating
- Mini: Aluminium and copper convector, in steel casing with aluminium grille

