



COMMERCIAL HEATING SOLUTIONS



CONVECTOR HEATING

Units 13-14 Charlwoods Road  
East Grinstead, West Sussex, RH19 2HU  
[www.clyderadiators.co.uk](http://www.clyderadiators.co.uk) 01342 305550

A brand of IRSAP, Italy's leading manufacturer of design led radiators.

EDS 808/1 04.09.18

# Contents

Clyde is a brand of the IRSAP, Italy's leading manufacturer of design led radiators. With over 50 years experience, we have the expertise to produce the best in quality & customer service.

Clyde provides bespoke solutions for LSTs, Cast Iron, Multi Column and Aluminium radiators. With a wide range of traditional and contemporary radiators, Clyde's solution based approach is designed to ensure we supply the ideal solution for all commercial and industrial requirements.

Our dedicated team of technical advisors and estimators will discuss your installation including the calculation of your heat output requirements (from drawings if necessary), arrange a full quotation based on your exact project specifications and provide lead times. They can also arrange a site visit from our National Sales Network if required.

For more information about Clyde or any of our products, please contact our customer service department: 01342 305522 / 305566

---

Key Features & Technical Data 2-3

---

Alumaxx® High Performance Convector 4-5

---

Radiator Models & Codes 6-8

---

Installation 9-10

---

# TRENCH

The Trench range is a practical alternative to underfloor heating, requiring no wall space and giving excellent heat output.

## KEY FEATURES

- Alumaxx® High Performance Convectors
- Lengths available from 800mm to 2600mm
- Depths of 300mm, 520mm or 620mm
- Aluminium and Steel Convector for high heat output and low weight
- Polyethylene Trench Unit
- 12 Grille finishes with Wood and Aluminium choices
- Standard fit suitable for new builds is available, as well as an alternative retro fit
- 5 year guarantee



## TECHNICAL DATA

- Pipework connection size is R $\frac{1}{2}$  Flow and Return.
- Range of pipework connection options are available to suit any application
- Convactor heat exchanger suitable for MTHW with a maximum flow temperature of 130°C and 10 bar pressure rating is available to special order.

## RANGE SELECTION

- 300mm, 520mm or 620mm depth
- Lengths range from 800mm to 2600mm
- Lengths over 2600 are supplied as two separate units, with one extended grill for a continuous cover
- 12 Aluminium and wooden grille finishes
- Standard connection; TBSE (Top Bottom Same End) illustrated on page 3
- The Trench is supplied with a Standard Fit which is suitable for new builds as it has protruding sides to allow for screed. Alternative Retro fit available.

## HEAT EMISSION RATES

- $\Delta T_{50}$  (75°C / 65°C / 20°C)
- $\Delta T_{55.5}$  (82°C / 71°C / 21°C)
- $\Delta T_{60}$  (90°C / 70°C / 20°C)
- BS EN 442-1 conditions of  $\Delta T_{50}$

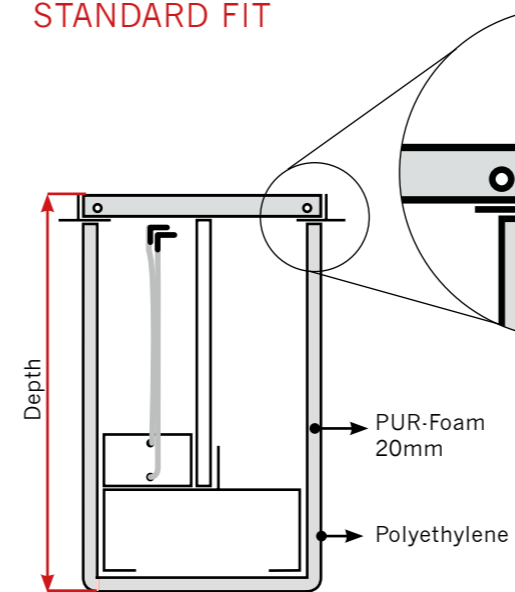


- White Aluminium
- Black Aluminium
- Bronze Aluminium
- Silver Aluminium
- Ash Untreated
- Ash Varnished
- Beech Untreated
- Beech Varnished
- Oak Untreated
- Oak Varnished
- Merbau Untreated
- Merbau Varnished

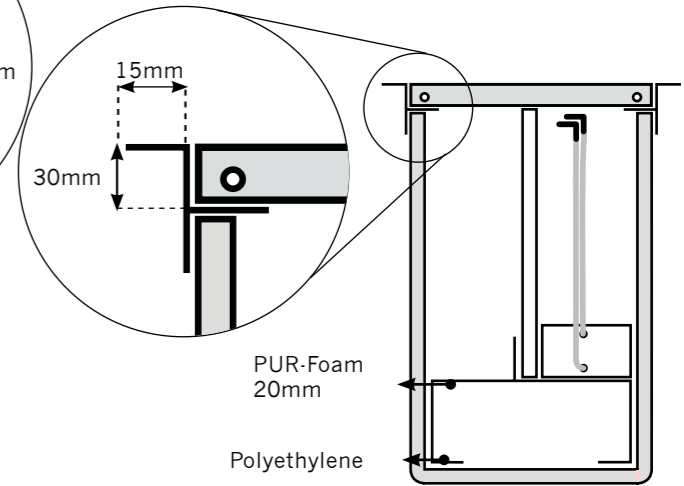
# TRENCH

## TECHNICAL DRAWINGS

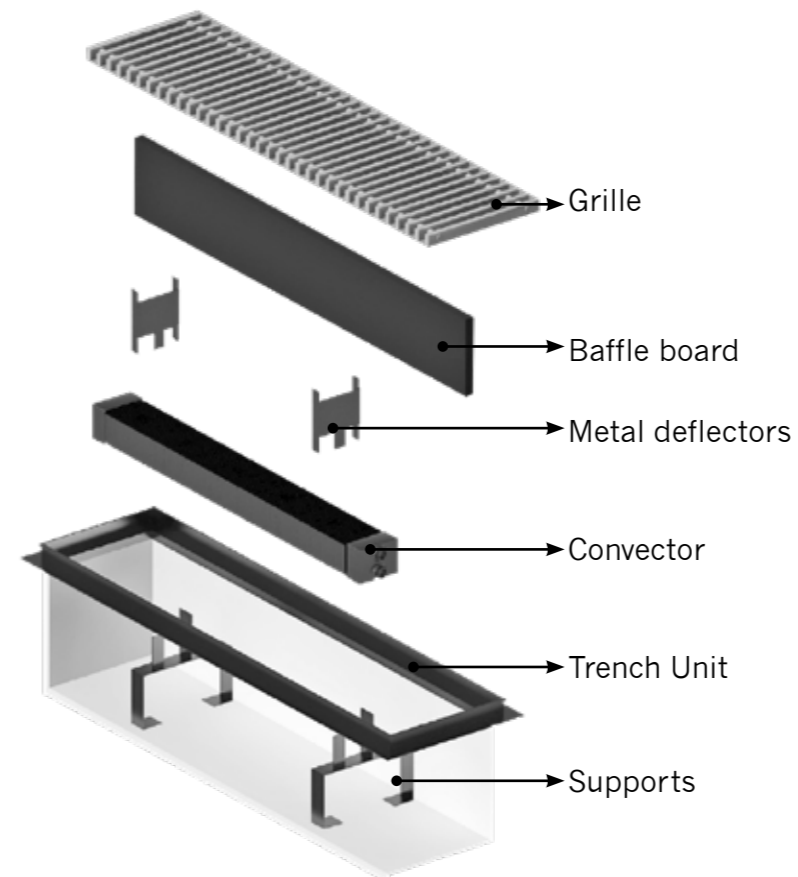
### STANDARD FIT



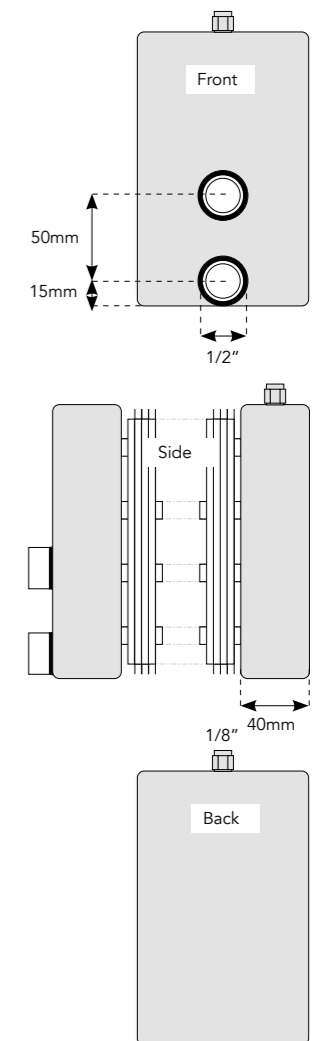
### RETRO FIT



## EXPLODED VIEW



## CONNECTIONS



# ALUMAXX® HIGH PERFORMANCE CONVECTOR

## ALUMAXX® HPC; A UNIQUE HIGH PERFORMANCE CONVECTOR

The Alumaxx® High Performance Convactor uses a unique combination of steel and aluminium, guaranteeing a high heat output, low weight and superior construction. The design and number of the aluminium fins contribute to the unique character of the patented Alumaxx® HPC convactor.

TOP VIEW



SIDE VIEW

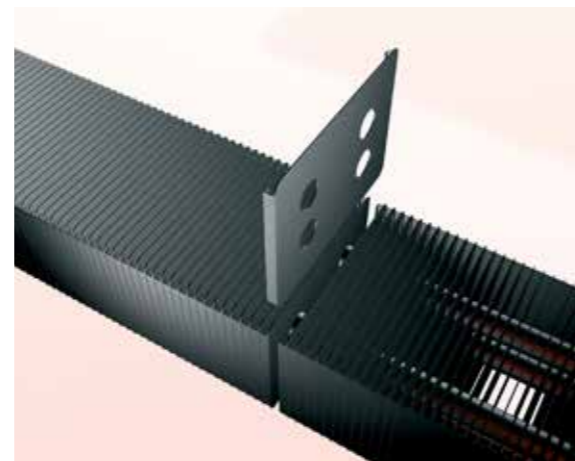


## SOPHISTICATED DESIGN

The patented design of the fins of the Alumaxx® HPC convactor is essential to delivering a superior product, with double-angled edges creating both a larger surface area and a strong rigid construction.

With a greater surface area than simple flat fins, the Alumaxx® achieves high heat output for its size.

The double edge 'U' shaped design of the fins creates rigid, flat side walls with no sharp edges, reducing the chance of them being bent or crumpled when handled or fitted. This helps maintain the flow of air through the convactor.



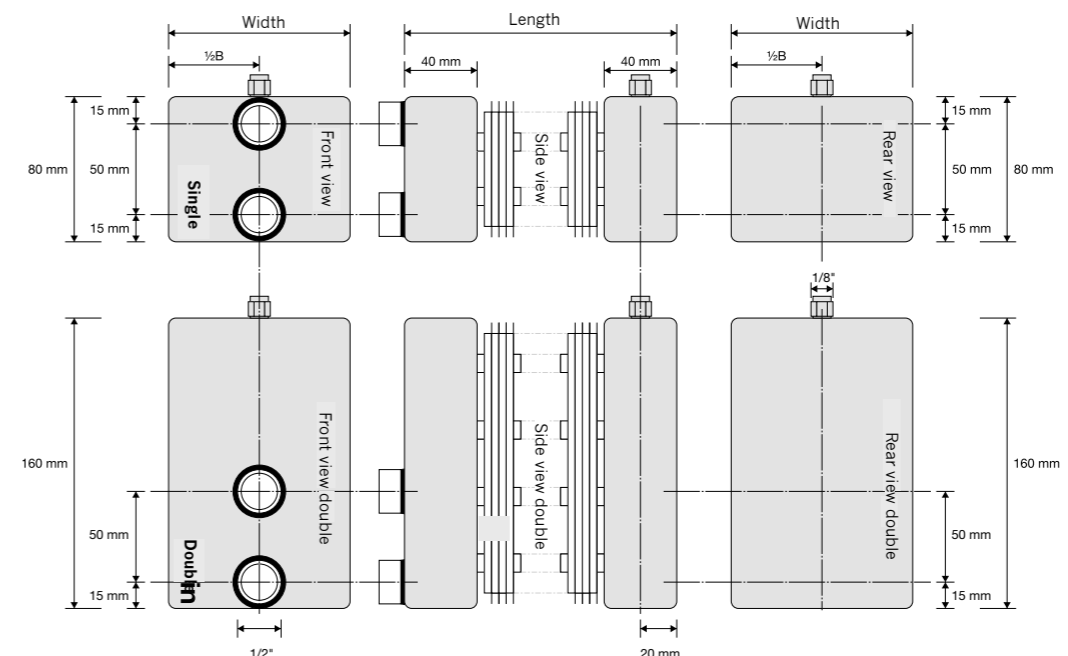
Each fin has shaped & interlocking edges for added strength

## COLLECTOR

The Alumaxx® HPC is extremely versatile with 6 connection options for installation. The standard version is Type B with flow and return on the same end, alternative configurations are available on request at no extra cost.



## STANDARD - TYPE B



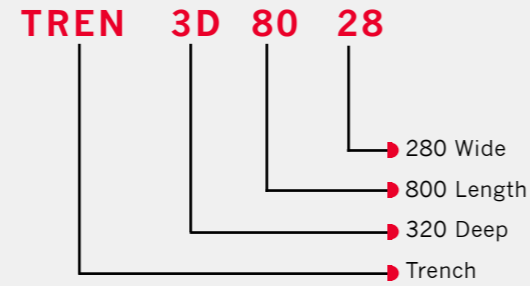
## TRENCH SIZES ΔT50 (75°C / 65°C / 20°C)

### RADIATOR MODELS & CODES

Tables below give outputs for each model height at Δt50. The model codes show;

- 1st column = product
- 2nd column = depth
- 3rd column = length
- 4th column = width

### MODEL CODE (example)



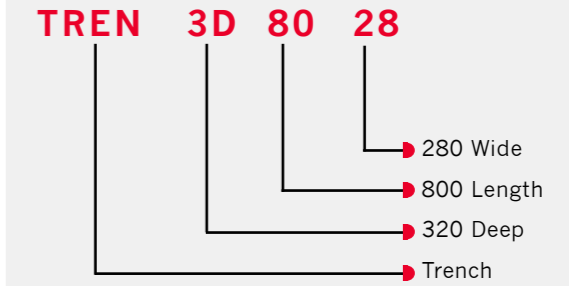
## TRENCH SIZES ΔT55 (75°C / 65°C / 20°C)

### RADIATOR MODELS & CODES

Tables below give outputs for each model height at Δt50

- 1st column = length
- 2nd column = width
- 3rd column = weight in kg
- 4th column = watts to ΔT50/ ΔT60
- 5th column = model code

### MODEL CODE (example)



### SELECTING YOUR TRENCH;

- Choose the depth, length, width and output
- The Trench is supplied with a standard fit, please quote at the time of order if a Retro Fit is required (see page 3)
- Select your aluminium or wooden grille finish (see page 2)

### SELECTING YOUR TRENCH;

- Choose the depth, length, width and output as above
- The Trench is supplied with a standard fit, please quote at the time of order if a Retro Fit is required (see page 3)
- Select your aluminium or wooden grille finish (see page 2)

Length (mm)	Width (mm)	300mm Depth			520mm Depth			620mm Depth		
		Weight (kg)	ΔT50 (watts)	Model Code	Weight (kg)	ΔT50 (watts)	Model Code	Weight (kg)	ΔT50 (watts)	Model Code
800	280	10	390	TREN3D8028	12	489	TREN5D8028	13	537	TREN6D8028
800	360	14	581	TREN3D8036	16	727	TREN5D8036	18	793	TREN6D8036
800	460	18	755	TREN3D8046	19	945	TREN5D8046	20	1026	TREN6D8046
1000	280	13	546	TREN3D1028	15	683	TREN5D1028	16	750	TREN6D1028
1000	360	18	815	TREN3D1036	20	1017	TREN5D1036	22	1115	TREN6D1036
1000	460	22	1061	TREN3D1046	24	1328	TREN5D1046	25	1453	TREN6D1046
1200	280	16	700	TREN3D1228	18	875	TREN5D1228	19	967	TREN6D1228
1200	360	22	1045	TREN3D1236	24	1360	TREN5D1236	26	1441	TREN6D1236
1200	460	26	1370	TREN3D1246	29	1713	TREN5D1246	30	1886	TREN6D1246
1400	280	19	859	TREN3D1428	21	1074	TREN5D1428	22	1190	TREN6D1428
1400	360	26	1285	TREN3D1436	28	1606	TREN5D1436	30	1779	TREN6D1436
1400	460	30	1687	TREN3D1446	34	2109	TREN5D1446	35	2321	TREN6D1446
1600	280	22	1030	TREN3D1628	24	1287	TREN5D1628	25	1431	TREN6D1628
1600	360	30	1525	TREN3D1636	32	1906	TREN5D1636	34	2128	TREN6D1636
1600	460	34	2027	TREN3D1646	39	2534	TREN5D1646	40	2786	TREN6D1646
1800	280	25	1200	TREN3D1828	27	1500	TREN5D1828	28	1664	TREN6D1828
1800	360	34	1780	TREN3D1836	36	2225	TREN5D1836	38	2476	TREN6D1836
1800	460	38	2353	TREN3D1846	44	2941	TREN5D1846	45	3250	TREN6D1846
2000	280	28	1370	TREN3D2028	30	1713	TREN5D2028	31	1906	TREN6D2028
2000	360	38	2043	TREN3D2036	40	2554	TREN5D2036	42	2843	TREN6D2036
2000	460	42	2693	TREN3D2046	49	3366	TREN5D2046	50	3733	TREN6D2046
2200	280	31	1548	TREN3D2228	33	1935	TREN5D2228	33	2128	TREN6D2228
2200	360	42	2306	TREN3D2236	44	2883	TREN5D2236	46	3211	TREN6D2236
2200	460	46	3049	TREN3D2246	54	3811	TREN5D2246	55	4217	TREN6D2246
2400	280	34	1734	TREN3D2428	37	2167	TREN5D2428	37	2418	TREN6D2428
2400	360	46	2569	TREN3D2436	48	3211	TREN5D2436	50	3578	TREN6D2436
2400	460	50	3405	TREN3D2446	59	4256	TREN5D2446	60	4720	TREN6D2446
2600	280	.	.	.	.	.	.	40	2669	TREN6D2628
2600	360	.	.	.	.	.	.	54	3966	TREN6D2636
2600	460	.	.	.	.	.	.	65	5223	TREN6D2646

Length (mm)	Width (mm)	300mm Depth			520mm Depth			620mm Depth		
		Weight (kg)	ΔT55.5 (watts)	Model Code	Weight (kg)	ΔT55.5 (watts)	Model Code	Weight (kg)	ΔT55.5 (watts)	Model Code
800	280	10	449	TREN3D8028	12	562	TREN5D8028	13	618	TREN6D8028
800	360	14	668	TREN3D8036	16	836	TREN5D8036	18	912	TREN6D8036
800	460	18	868	TREN3D8046	19	1087	TREN5D8046	20	1180	TREN6D8046
1000	280	13	628	TREN3D1028	15	785	TREN5D1028	16	863	TREN6D1028
1000	360	18	937	TREN3D1036	20	1170	TREN5D1036	22	1282	TREN6D1036
1000	460	22	1220	TREN3D1046	24	1527	TREN5D1046	25	1671	TREN6D1046
1200	280	16	805	TREN3D1228	18	1006	TREN5D1228	19	1112	TREN6D1228
1200	360	22	1202	TREN3D1236	24	1564	TREN5D1236	26	1657	TREN6D1236
1200	460	26	1576	TREN3D1246	29	1970	TREN5D1246	30	2169	TREN6D1246
1400	280	19	988	TREN3D1428	21	1235	TREN5D1428	22	1369	TREN6D1428
1400	360	26	1478	TREN3D1436	28	1847	TREN5D1436	30	2046	TREN6D1436
1400	460	30	1940	TREN3D1446	34	2425	TREN5D1446	35	2669	TREN6D1446
1600	280	22	1185	TREN3D1628	24	1480	TREN5D1628	25	1646	TREN6D1628
1600	360	30	1754	TREN3D1636	32	2192	TREN5D1636	34	2447	TREN6D1636
1600	460	34	2331	TREN3D1646	39	2914	TREN5D1646	40	3204	TREN6D1646
1800	280	25	1380	TREN3D1828	27	1725	TREN5D1828	28	1914	TREN6D1828
1800	360	34	2047	TREN3D1836	36	2559	TREN5D1836	38	2847	TREN6D1836
1800	460	38	2706	TREN3D1846	44	3382	TREN5D1846	45	3738	TREN6D1846
2000	280	28	1576	TREN3D2028	30	1970	TREN5D2028	31	2192	TREN6D2028
2000	360	38	2349	TREN3D2036	40	2937	TREN5D2036	42	3269	TREN6D2036
2000	460	42	3097	TREN3D2046	49	3871	TREN5D2046	50	4293	TREN6D2046
2200	280	31	1780	TREN3D2228	33	2225	TREN5D2228	33	2447	TREN6D2228
2200	360	42	2652	TREN3D2236	44	3315	TREN5D2236	46	3693	TREN6D2236
2200	460	46	3506	TREN3D2246	54	4383	TREN5D2246	55	4850	TREN6D2246
2400	280	34	1994	TREN3D2428	37	2492	TREN5D2428	37	2781	TREN6D2428
2400	360	46	2954	TREN3D2436	48	3693	TREN5D2436	50	4115	TREN6D2436
2400	460	50	3916	TREN3D2446	59	4894	TREN5D2446	60	5428	TREN6D2446
2600	280	.	.	.	.	.	.	40	3069	TREN6D2628
2600	360	.	.	.	.	.	.	54	4561	TREN6D2636
2600	460	.	.	.	.	.	.	65	6006	TREN6D2646

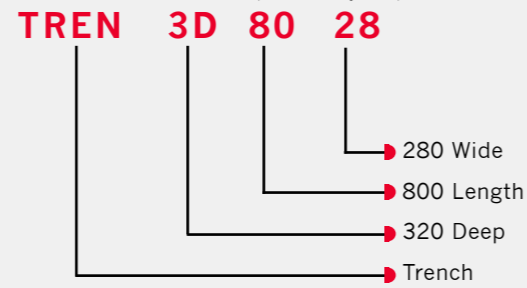
## TRENCH SIZES $\Delta T60$ (75°C / 65°C / 20°C)

### RADIATOR MODELS & CODES

Tables below give outputs for each model height at  $\Delta t50$

- 1st column = length
- 2nd column = width
- 3rd column = weight in kg
- 4th column = watts to  $\Delta T50$  /  $\Delta T60$
- 5th column = model code

### MODEL CODE (example)



### SELECTING YOUR TRENCH;

- Choose the depth, length, width and output as above
- The Trench is supplied with a standard fit, please quote at the time of order if a Retro Fit is required (see page 3)
- Select your aluminium or wooden grille finish (see page 2)

Length (mm)	Width (mm)	300mm Depth			520mm Depth			620mm Depth		
		Weight (kg)	$\Delta T60$ (watts)	Model Code	Weight (kg)	$\Delta T60$ (watts)	Model Code	Weight (kg)	$\Delta T60$ (watts)	Model Code
800	280	10	507	TREN3D8028	12	636	TREN5D8028	13	698	TREN6D8028
800	360	14	755	TREN3D8036	16	945	TREN5D8036	18	1031	TREN6D8036
800	460	18	982	TREN3D8046	19	1229	TREN5D8046	20	1334	TREN6D8046
1000	280	13	710	TREN3D1028	15	888	TREN5D1028	16	975	TREN6D1028
1000	360	18	1060	TREN3D1036	20	1322	TREN5D1036	22	1450	TREN6D1036
1000	460	22	1379	TREN3D1046	24	1726	TREN5D1046	25	1889	TREN6D1046
1200	280	16	910	TREN3D1228	18	1136	TREN5D1228	19	1257	TREN6D1228
1200	360	22	1359	TREN3D1236	24	1768	TREN5D1236	26	1873	TREN6D1236
1200	460	26	1781	TREN3D1246	29	2227	TREN5D1246	30	2452	TREN6D1246
1400	280	19	1117	TREN3D1428	21	1396	TREN5D1428	22	1547	TREN6D1428
1400	360	26	1671	TREN3D1436	28	2088	TREN5D1436	30	2313	TREN6D1436
1400	460	30	2193	TREN3D1446	34	2742	TREN5D1446	35	3017	TREN6D1446
1600	280	22	1339	TREN3D1628	24	1673	TREN5D1628	25	1860	TREN6D1628
1600	360	30	1983	TREN3D1636	32	2478	TREN5D1636	34	2766	TREN6D1636
1600	460	34	2635	TREN3D1646	39	3294	TREN5D1646	40	3622	TREN6D1646
1800	280	25	1560	TREN3D1828	27	1950	TREN5D1828	28	2163	TREN6D1828
1800	360	34	2314	TREN3D1836	36	2893	TREN5D1836	38	3219	TREN6D1836
1800	460	38	3059	TREN3D1846	44	3823	TREN5D1846	45	4225	TREN6D1846
2000	280	28	1781	TREN3D2028	30	2227	TREN5D2028	31	2478	TREN6D2028
2000	360	38	2656	TREN3D2036	40	3320	TREN5D2036	42	3696	TREN6D2036
2000	460	42	3501	TREN3D2046	49	4376	TREN5D2046	50	4853	TREN6D2046
2200	280	31	2012	TREN3D2228	33	2516	TREN5D2228	33	2766	TREN6D2228
2200	360	42	2998	TREN3D2236	44	3748	TREN5D2236	46	4174	TREN6D2236
2200	460	46	3964	TREN3D2246	54	4954	TREN5D2246	55	5482	TREN6D2246
2400	280	34	2254	TREN3D2428	37	2817	TREN5D2428	37	3143	TREN6D2428
2400	360	46	3340	TREN3D2436	48	4174	TREN5D2436	50	4651	TREN6D2436
2400	460	50	4427	TREN3D2446	59	5533	TREN5D2446	60	6136	TREN6D2446
2600	280	-	-	-	-	-	-	40	3470	TREN6D2628
2600	360	-	-	-	-	-	-	54	5156	TREN6D2636
2600	460	-	-	-	-	-	-	65	6790	TREN6D2646

## INSTALLATION

### PRELIMINARY

You will need:

- Pit (see below)
- Tape Measure
- Spirit Level
- Plumbing Tools
- Inline Ball Valve / room stat / remote adjustment valve (not supplied)

### INSTALLATION OVERVIEW

Before installing the trench, suitable holes need to be drilled through the side of the unit for the pipework to run through. See page 3 for connections.

Fig.2 and Fig.3 show the correct installation for the Trench. The pipework typically enters the unit below the top frame, highlighted in red.

Fig.2

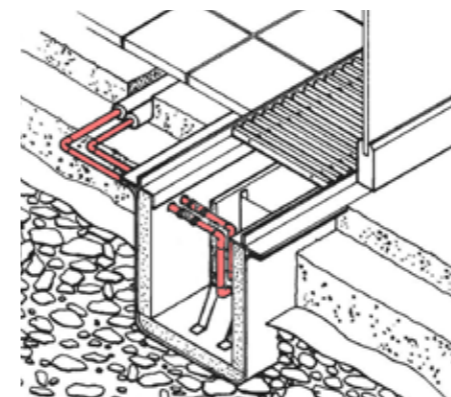
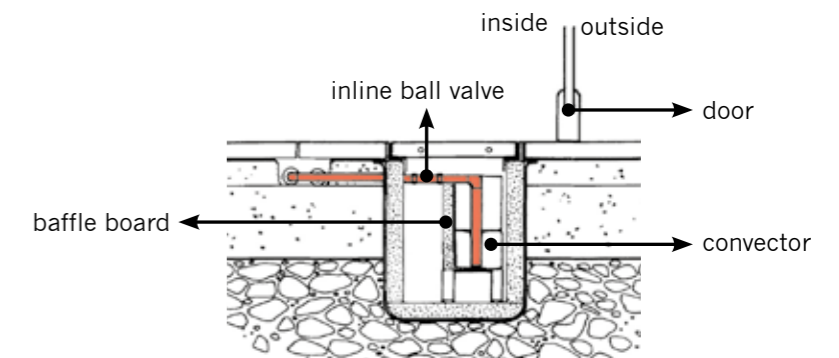
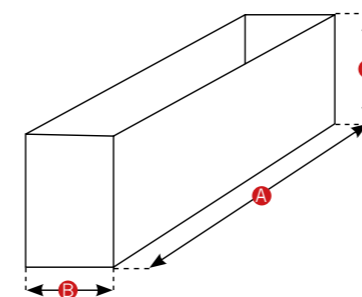


Fig.3

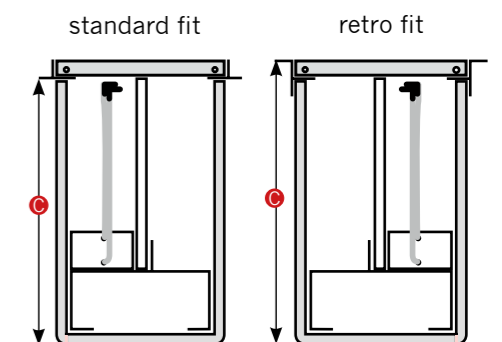


### 1. PIT PREPARATION

The Pit to hold the Trench unit should be dug with an additional 20mm to the length and width to the Trench's dimensions to allow for easy insertion. There is an overlap at the top of the trench unit which will cover the gaps between the trench unit and ground/flooring.



- A = length of trench + 20mm
- B = width of trench + 20mm
- C = standard fit: depth of trench minus 30mm  
retro fit: depth of trench



### 2. PREPARE PIPEWORK

Lower the Trench unit into the pit and run the pipework through the unit.

### 3. SET UP THE TRENCH

1. Insert the support stand into the Trench unit, with the support being on the outside/rear edge of the unit, then carefully lower the convector onto the stand. See Fig.4 (see below)
2. Connect the pipework into the convector. See Fig.5
3. Commission and ensure that the convector is fully heating.
4. With the heating turned off, fit the metal deflectors by pushing them through the fins on top of the convector. These are a tight fit. See Fig.5
5. Fit the baffle board in by sliding into position in the slots on the support stand. See Fig.6.
6. Unroll the grille and fix into position. See Fig.7

Fig.4

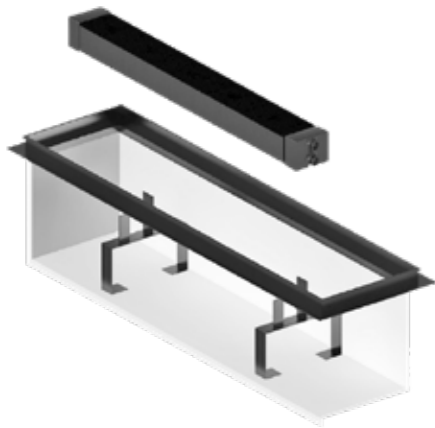


Fig.5

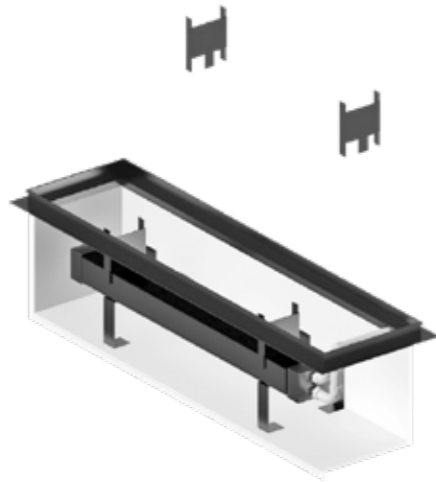
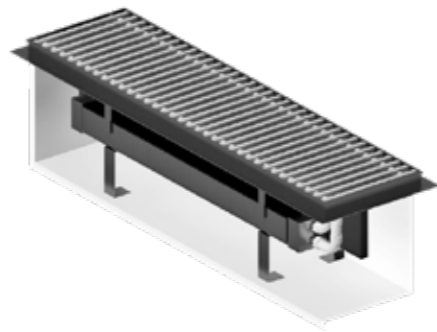


Fig.6



Fig.7



### OTHER CLYDE PRODUCTS



#### COMMERCIAL HEATING SOLUTIONS

- 4 Flat Panel radiators
- Lightweight & Efficient Sectional Aluminum
- Sectional Cast Iron in 4 styles
- 2 Bespoke LST options, made to specification
- Mini: Aluminium and copper convector, in steel casing with aluminium grille
- Sectional Steel Multi Column in over 3200 sizes



[www.clyderadiators.co.uk](http://www.clyderadiators.co.uk)